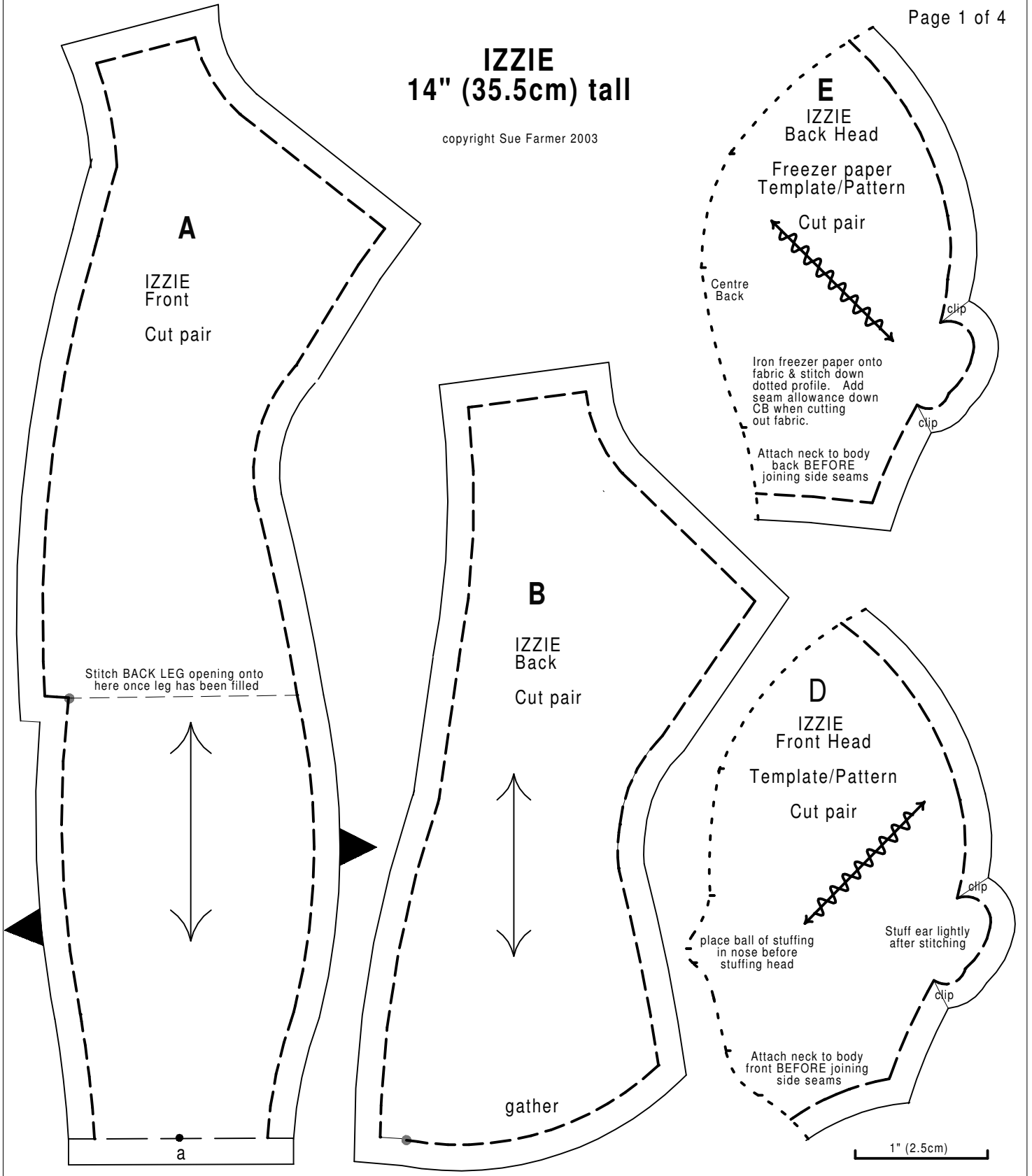


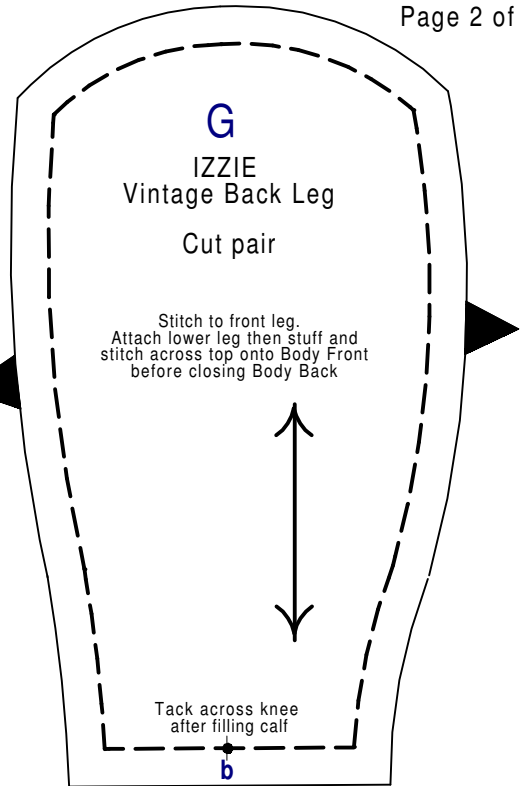
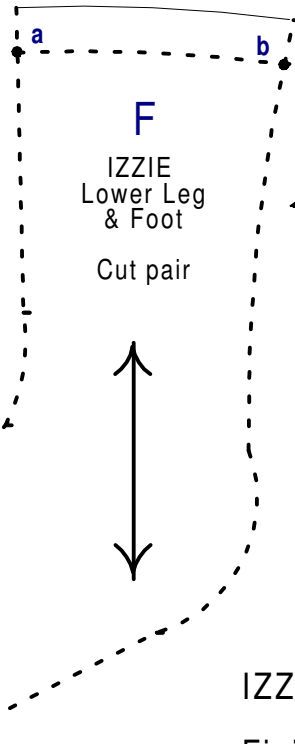
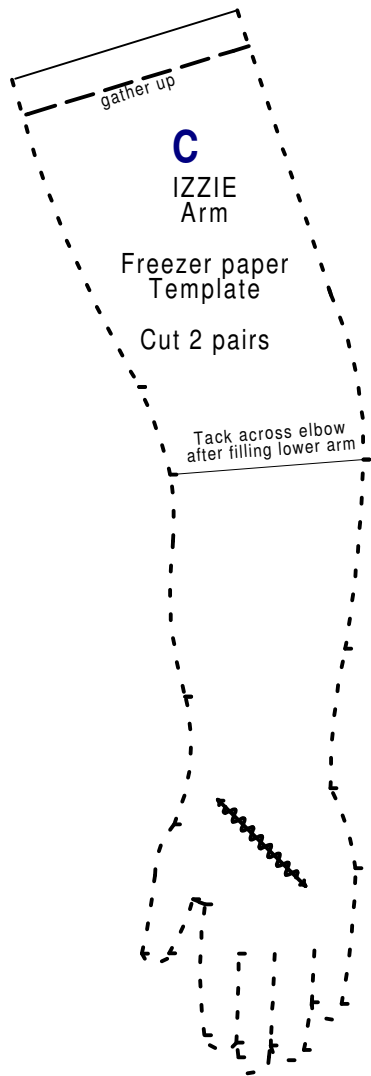
# IZZIE 14" (35.5cm) tall

copyright Sue Farmer 2003



# IZZIE 14" (35.5cm) tall

copyright Sue Farmer 2003



## IZZIE

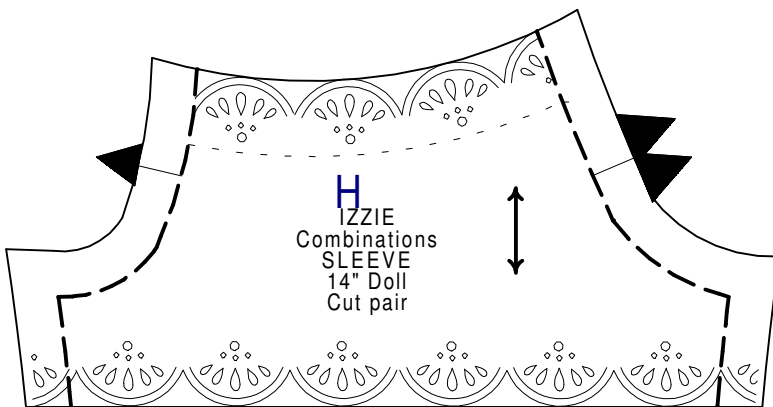
Finished size 14" (35.5cm)  
Fabric: muslin (calico in English)

Note:  
Head is joined to body as one and only then is it stuffed.

Legs backs are attached and legs are stuffed before filling head and torso

Simple needlesculpting of nostrils, (but not nose), eyes (a stitch each side of eye), mouth corners and a stitch across mouth from corner to corner. All stitching enters and exits from behind the ear.

Ear is padded lightly and sculpted with a few stitches then it is caught back to cover the stitch ends.



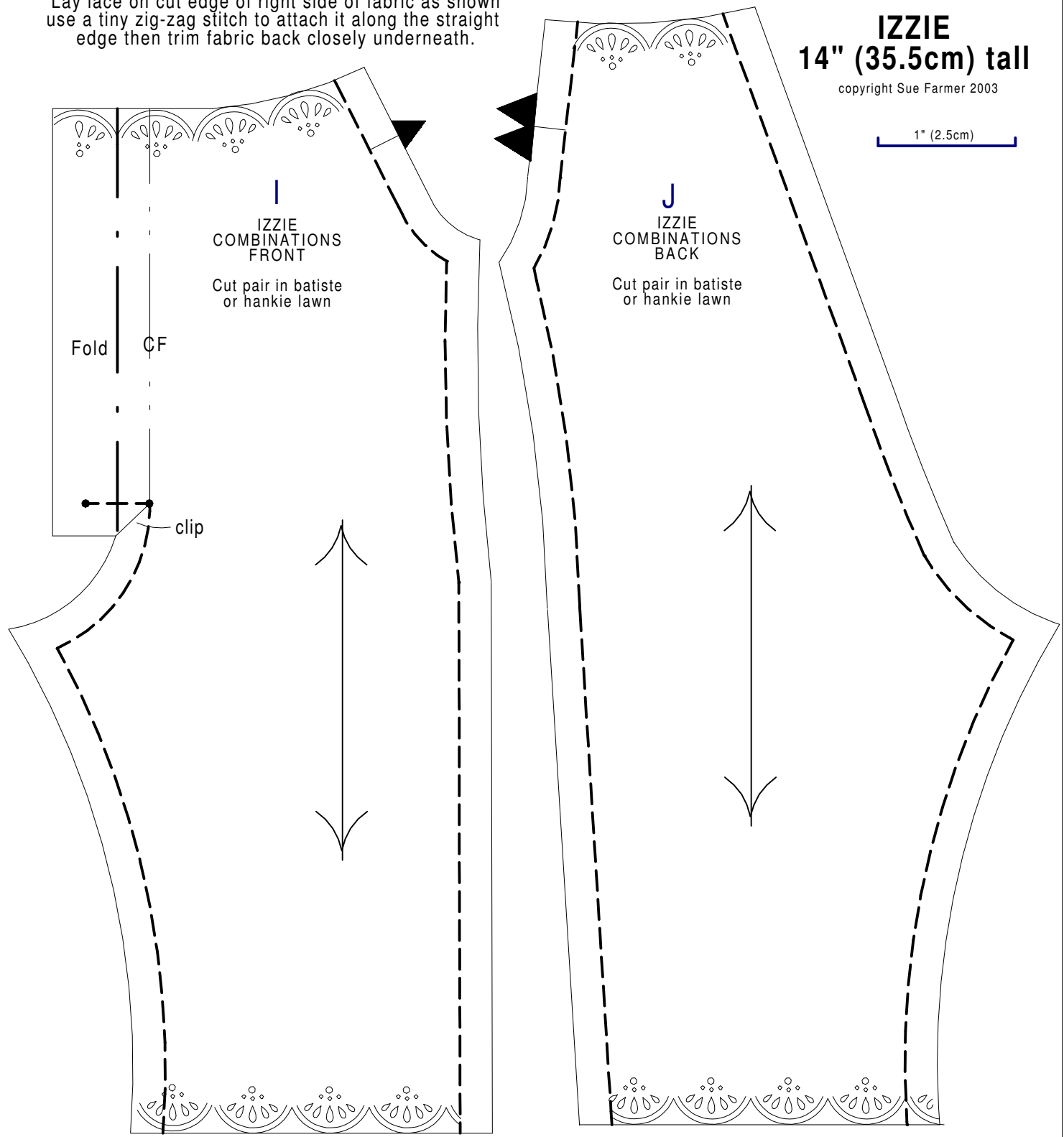
1" (2.5cm)

Lay lace on cut edge of right side of fabric as shown use a tiny zig-zag stitch to attach it along the straight edge then trim fabric back closely underneath.

# IZZIE 14" (35.5cm) tall

copyright Sue Farmer 2003

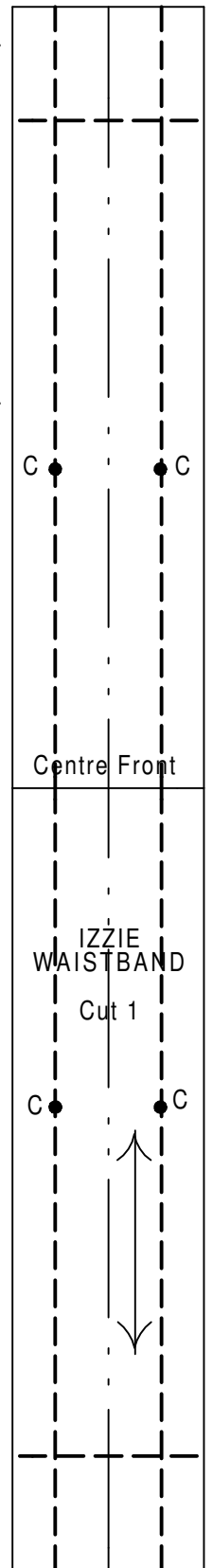
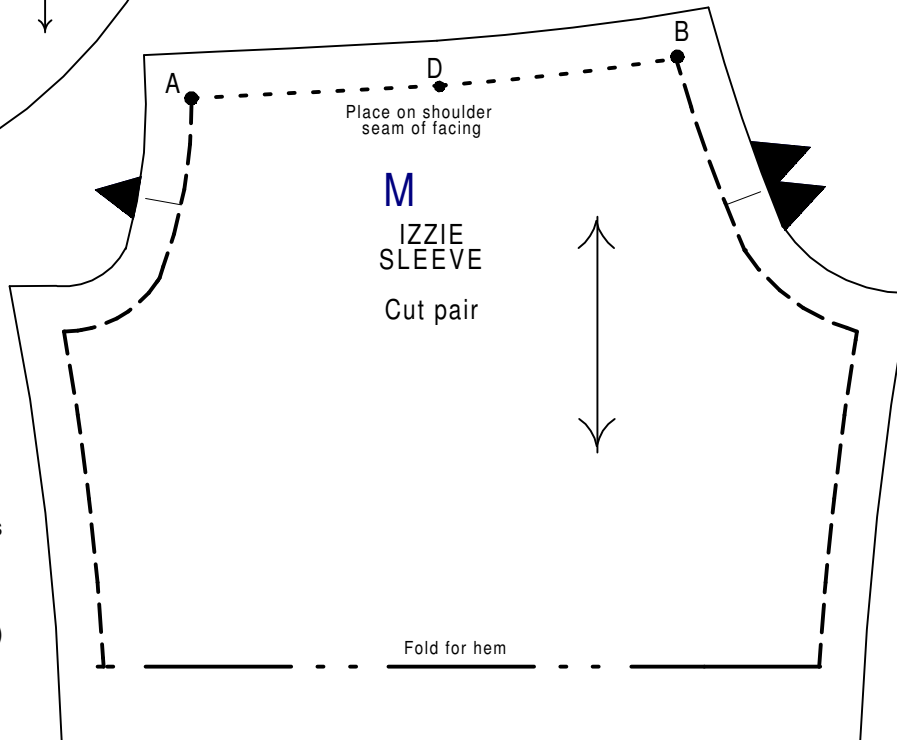
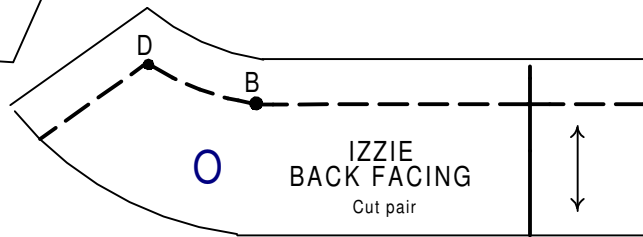
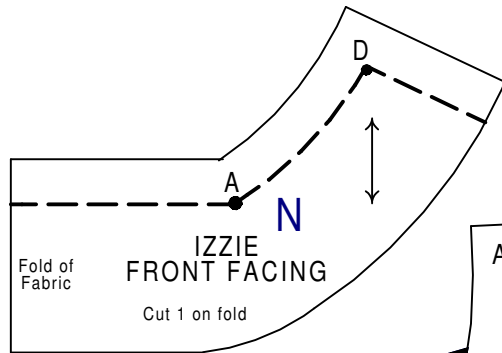
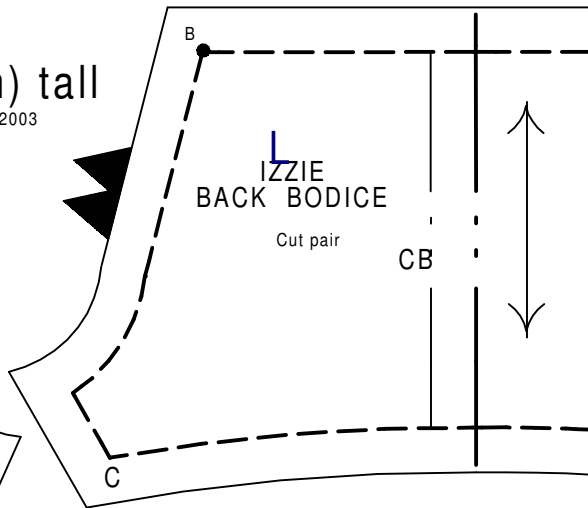
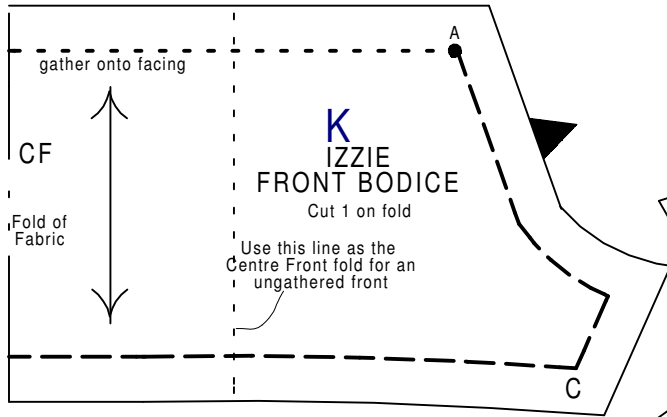
1" (2.5cm)



# IZZIE

## 14" (35.5cm) tall

copyright Sue Farmer 2003



1" (2.5cm)

The waistband is folded in half then attached to the waist of the bodice first, aligning side seams with waistband dots C Gather skirt and stitch onto Band The fabric can be a contrast (as a fake sash) or same fabric

Skirt is cut 25" (63.5cm) long by 8.5" (22cm) wide - this includes 3/4" (1.75cm) seam at the centre back (to fit with facing) and 1" (2.5cm) hem allowance. Run a gathering thread from 2" in from one end across to the same point on the other end draw up and pin to bodice/waistband and stitch